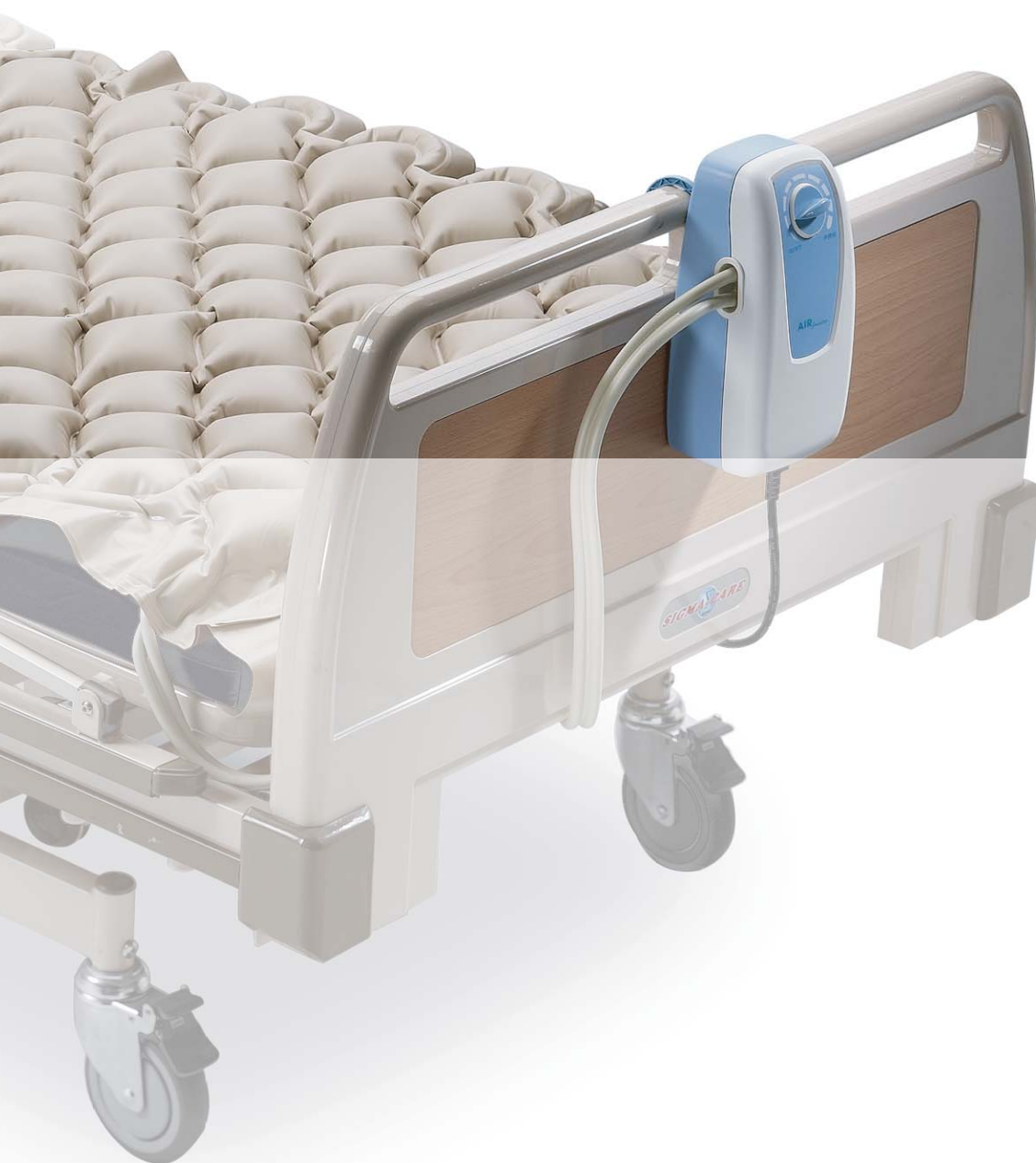


# AIR Junior Pressure Relief Bubble Pad System

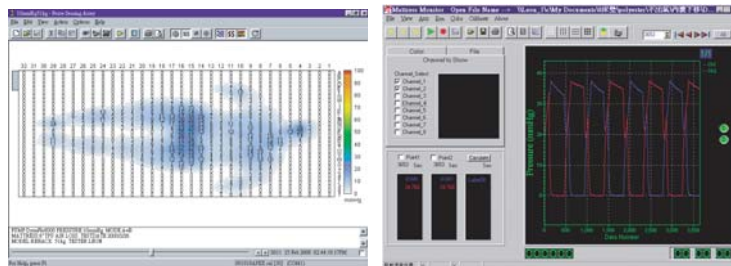
## AIR Junior 1000/2000

AIR Junior pump is specifically designed for using in alternating pressure overlay system. Equipped with bubble pad, it offers users one of the most economical choices for the prevention and treatment of pressure sore stage I with maximum weight capacity of 100 kg. The adjustable pressure control function (only available on AIR Junior 2000) provides customized therapy for each individual patient. AIR Junior's basic function with stylish look provides reliable alternating pressure therapy at a cost-effective price but in a high quality image.



### Key Features:

- ◆ Patented air compressor chamber with ultra-quiet operation.
- ◆ Adjustable comfort range with easy operating control knob (only available with AIR Junior 2000).
- ◆ Adjustable hangers to suit any kind of hospital bed frame.
- ◆ Compact pump for easy handling.



Apex adopts the Dynamic Pressure Monitoring System to trace the real-time internal pressure of the mattress and develops a series of state-of-the-art mattress overlay and replacement system for the prevention, treatment and management pressure ulcers.



### Specifications

	<b>AIR Junior 2000</b>	<b>AIR Junior 1000</b>
Electrical	AC120V/60Hz, <1A AC230V/50Hz, <1A	AC120V/60Hz, <1A AC230V/50Hz, <1A
Pressure Range (mmHg)	50 - 105	100
Air Output (lpm)	> 4	> 4
Cycle Time	8 min @ 60 Hz, 9.6 min @ 50 Hz	8 min @ 60 Hz, 9.6 min @ 50 Hz
Dimension (L x W x H)	25.4 x 13 x 10 cm / 10" x 5.1" x 3.9"	25.4 x 13 x 10 cm / 10" x 5.1" x 3.9"
Weight	1.4 kg / 3.1 lb	1.4 kg / 3.1 lb
Arrangement	2.5" bubble pad (w/ extension flaps)	2.5" bubble pad (w/o extension flaps)
Material	PVC	PVC
Dimension (L x W x H)	300 x 86 x 6.4 cm / 118" x 33.9" x 2.5"	198 x 86 x 6.4 cm / 80" x 33.9" x 2.5"
Weight	2.4 kg / 5.3 lb	1.9 kg / 4.2 lb

All specifications are subject to change without notice.



Private label is welcome



## APEX MEDICAL CORP.

9, Min Sheng St. Tu-Cheng,  
Taipei County, 236, Taiwan, R.O.C.  
TEL: 886-2-22683100  
FAX: 886-2-22686525  
<http://www.apexmedical.com>