

Excel Pressure Relief Bubble Pad System

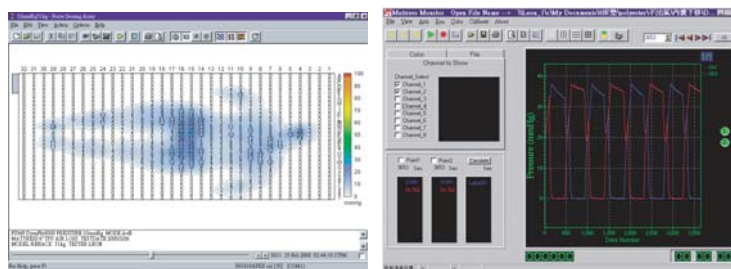


Excel 1000 / 2000

Excel 1000/2000 is one of most economical choices in pressure mattress overlay system. The bubble pad is equipped with extension sheets to be tucked into both ends to avoid slipping (only available on Excel 2000). The bubble pad is so economical that it's often treated as one-time-use product. This system is suitable for treatment of pressure sore stage I prevention with maximum weight capacity of 100kg.

Key Features:

- ◆ Patented air compressor chamber with ultra-quiet operation.
- ◆ Adjustable comfort range with easy operating control knob (only available with Excel 2000).
- ◆ Adjustable hangers to suit any kind of hospital bed frame (only available with Excel 2000).



Apex adopts the Dynamic Pressure Monitoring System to trace the real-time internal pressure of the mattress and develops a series of state-of-the-art mattress overlay and replacement system for the prevention, treatment and management pressure ulcers.



Specifications

		Excel 2000	Excel 1000
PUMP	Electrical	AC120V/60Hz, <1A AC230V/50Hz, <1A	AC120V/60Hz, <1A AC230V/50Hz, <1A
	Air Output (lpm)	> 4	> 4
	Pressure Range (mmHg)	50 - 105	100
	Cycle Time (min)	5 min @ 60 Hz, 6 min @ 50 Hz	5 min @ 60 Hz, 6 min @ 50 Hz
	Dimension (L x W x H)	25.4 x 13 x 10 cm / 10" x 5.1" x 3.9"	25.4 x 13 x 10 cm / 10" x 5.1" x 3.9"
	Weight	1.6 kg / 3.5 lb	1.3 kg / 2.9 lb
BUBBLE PAD	Arrangement	2.5" bubble pad (w/ extension flaps)	2.5" bubble pad (w/o extension flaps)
	Material	PVC	PVC
	Dimension (L x W x H)	300 x 86 x 6.4 cm / 118" x 33.9" x 2.5"	198 x 86 x 6.4 cm / 80" x 33.9" x 2.5"
	Weight	2.4 kg / 5.3 lb	1.9 kg / 4.2 lb

All specifications are subject to change without notice.



Private label is welcome

APEX MEDICAL CORP.
 9, Min Sheng St. Tu-Cheng,
 Taipei County, 236, Taiwan, R.O.C.
 TEL: 886-2-22683100
 FAX: 886-2-22686525
<http://www.apexmedical.com>