



# NeoPRO Alternating Pressure Relief Mattress Replacement System

## NeoPRO 10000/8000

The NeoPRO series is an advanced alternating pressure relief system suitable for high-risk patients.

The digital controlled pump unit, which provides adjustable pressure and cycle time, is compact and effective in pressure control and management. The replacement mattress, which offers a low air loss therapy, provides patients a comfortable pressure support suiting for each individual. The patented cell-in-cell design allows the inflation and deflation of air cells to be achieved in the shortest amount of time while providing the good pressure dispersion. The inner cell also offers a sufficient weight support during a power failure.



## Features:

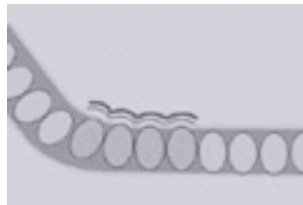
- ◆ Smart sensor technology with easy recognized graphic icons.
- ◆ AutoFirm function to inflate mattress quickly and facilitate patient to access.
- ◆ Low pressure indicator illuminates when the pre-set pressure is not reached.
- ◆ Panel Lock function prevents persons other than caretakers from changing the setting.
- ◆ Seat-Inflate function assist patient to sit-up.
- ◆ Vapor permeable, water resistant and fire retardant cover.
- ◆ Intubation facility to active emergency intubation. (Only available on NeoPRO 10000)
- ◆ Emergency CPR deflation for rapid deflation of mattress.



**NEOPRO Pump**  
Digital-control pump with easy recognized graphic icons.



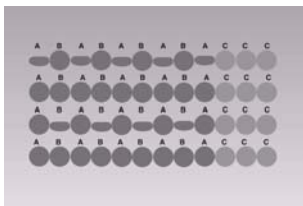
Large Air Filter Intake



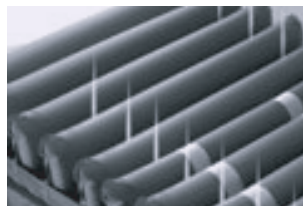
Seat Inflation



Emergency CPR



Pillow Function



Intubation Facility



Low Air Loss

## Specifications

		NeoPRO 10000	NeoPRO 8000	
PUMP	Electrical	AC120V/60Hz, 1A AC230V/50Hz, 1A	AC120V/60Hz, 1A AC230V/50Hz, 1A	
	Air Output (lpm)	> 20	> 20	
	Pressure Range (mmHg)	Adjustable 6 levels	Adjustable 6 levels	
	Cycle Time (min)	Adjustable 5, 10, 15, 20 min	Adjustable 5, 10, 15, 20 min	
	Dimension (L x W x H)	37x27x13cm / 14.4"x10.5"x5.0"	37x27x13cm / 14.4"x10.5"x5.0"	
	Weight	5.0 kg	5.0 kg	
MATTRESS	Arrangement	20 x 10"	20 x 8"	
	Material	Cover	Nylon / PU	Nylon / PU
		Cells	Nylon / PU	Nylon / PU
		Base	Nylon / PU	Nylon / PU
	Dimension (L x W x H)	200x90x25.4cm / 78.7"x35.4"x10"	200x90x20.3cm / 78.7"x35.4"x8"	
Weight	10.0 kg / 22.0 lb	9.0 kg / 19.8 lb		

All specifications are subject to change without notice.



Private label is welcome



9, Min Sheng St. Tu-Cheng,  
Taipei County, 236, Taiwan, R.O.C.  
TEL: 886-2-22683100  
FAX: 886-2-22686525  
<http://www.apexmedical.com>