

# PM100 Overlay & Replacement Systems



## PM100a 2.5" Alternating Pressure Relief Bubble Pad System

## PM100b 5" Alternating Pressure Relief Mattress Overlay System

## PM100c 8" Alternating Pressure Relief Mattress Replacement System

PM100 series are specifically designed for therapy treatment of pressure sore stage I & II prevention. There are three systems in the PM100 series, PM100a, PM100b and PM100c, each with their specific market needs and medical reimbursement category. PM100a is equipped with bubble pad for reimbursement category E0180\*, PM100b is equipped with interchangeable 5" tube-type mattress for E0372\* and PM100c is equipped with interchangeable 8" tube-type mattress for E0277\*.

\* Reimbursement HCPCS codes are regulated under U.S. Medicare.



### PM100a System

■ Treatment of pressure sore stage I prevention with maximum weight capacity of 100kg



#### Control Panel

**Power Switch** : turn on/off the unit  
**Control Knob** : adjust comfort range (8 levels)



### PM100b System

■ Treatment of pressure sore stage I & II prevention with maximum weight capacity of 140kg



#### Control Panel

**Power Switch** : turn on/off the unit  
**Control Knob** : adjust comfort range (8 levels)  
**Normal Pressure Indicator** : illuminate when the set pressure is reached  
**Low Pressure Indication** : illuminate when the set pressure is not reached



### PM100c System

■ Treatment of pressure sore stage I & II prevention with maximum weight capacity of 160kg



#### Control Panel

**Power Switch** : turn on/off the unit  
**Control Knob** : adjust comfort range (8 levels)  
**Normal Pressure Indicator** : illuminate when the set pressure is reached  
**Low Pressure Indication** : illuminate when the set pressure is not reached  
**Static** : shift from the alternating mode to static mode

### 1. Static

To suspend the alternating mode and change it into a regular air mattress with pressure adjusting capability. (Only available in PM100c)

### 2. External Air Filter Intake

To filter out bacteria and allow only the clean air to flow into the pump unit. This will substantially increase the life expectancy of the pump unit.

### 3. Quick Connector

To easily and quickly connect and disconnect the air hoses between mattress and pump. It also functions as transport facility. (Only available in PM100b & c)

### 4. CPR Valves

These CPR valves are designed for quick release of air from cells when there is an emergency need to perform CPR on the patient. (Only available in PM100b & c)

### 5. Security

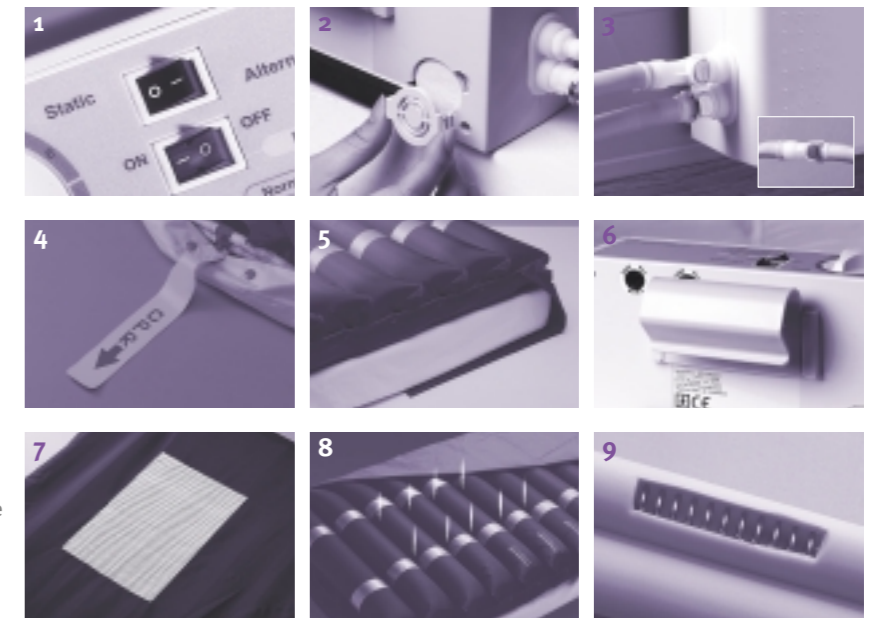
Extra flaps on both top and bottom side of mattress base (PM100a & b) or securing straps on the mattress base (PM100c) to ensure the overlay is securely fitted for user safety.

### 6. Plastic Hanger

Easy clip-on hanger for sturdy fixture, which can attach on most bed frames

### 7. Slip Resistant Mat

The bottom of the mattress comes with slip-resistant mats to help preventing any slide movement of the mattress. They provide better stability and safety. (Only available in PM100c)



### 8. Low Air Loss

To provide good ventilation and keep the users dry from unwanted humidity building-up between the body and the mattress. (Only available in PM100b)

### 9. Spring-Loaded Tubes

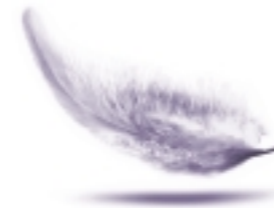
To prevent any kinks or unwanted bending on the tubes between pump and mattress to promote smoother airflow.

## Specification

	System	PM100a System	PM100b System	PM100c System
<b>PUMP</b>	Electrical	AC120V/60Hz 0.1A ; AC230V/50Hz 0.05A		
	Air Output (lpm)	>4		
	Pressure Range (mmHg)	50 - 105	40 - 90	30 - 50
	Cycle Time (min)	8 min / 60 Hz, 9.6 min / 50 Hz		
	Dimension (L x W x H)	25 x 13.5 x 9.5 cm or 9.8" x 5.3" x 3.7"		
	Weight	1.8 kg or 4.0 lb		
<b>MATTRESS</b>	Arrangement	2.5" Bubble pad	17 x 5"	20 x 8"
	Material	PVC (w/ extension pad)	Nylon/PVC	Nylon/PU
	Dimension (L x W x H)	198 x 86 x 6.4 cm or 80" x 33.9" x 2.5"	200 x 87 x 12.7 cm or 78.7" x 34.3" x 5"	200 x 90 x 20.3 cm or 78.7" x 35.4" x 8"
	Weight	1.9 kg or 4.2 lb	5.0 kg or 11.0 lb	10.0 kg or 22.1 lb

\* The manufacturer reserves the right to modify the specification without notice.





**Support Surfaces PM100 Series**



PM100



**APEX MEDICAL CORP.**

9, Min Sheng St. Tu-Cheng,  
Taipei County, 236, Taiwan, R.O.C.  
Tel:886-2-2268 3100  
Fax:886-2-22686525  
E-mail:ss@apexmedical.com.tw  
<http://www.apexmedical.com.tw>